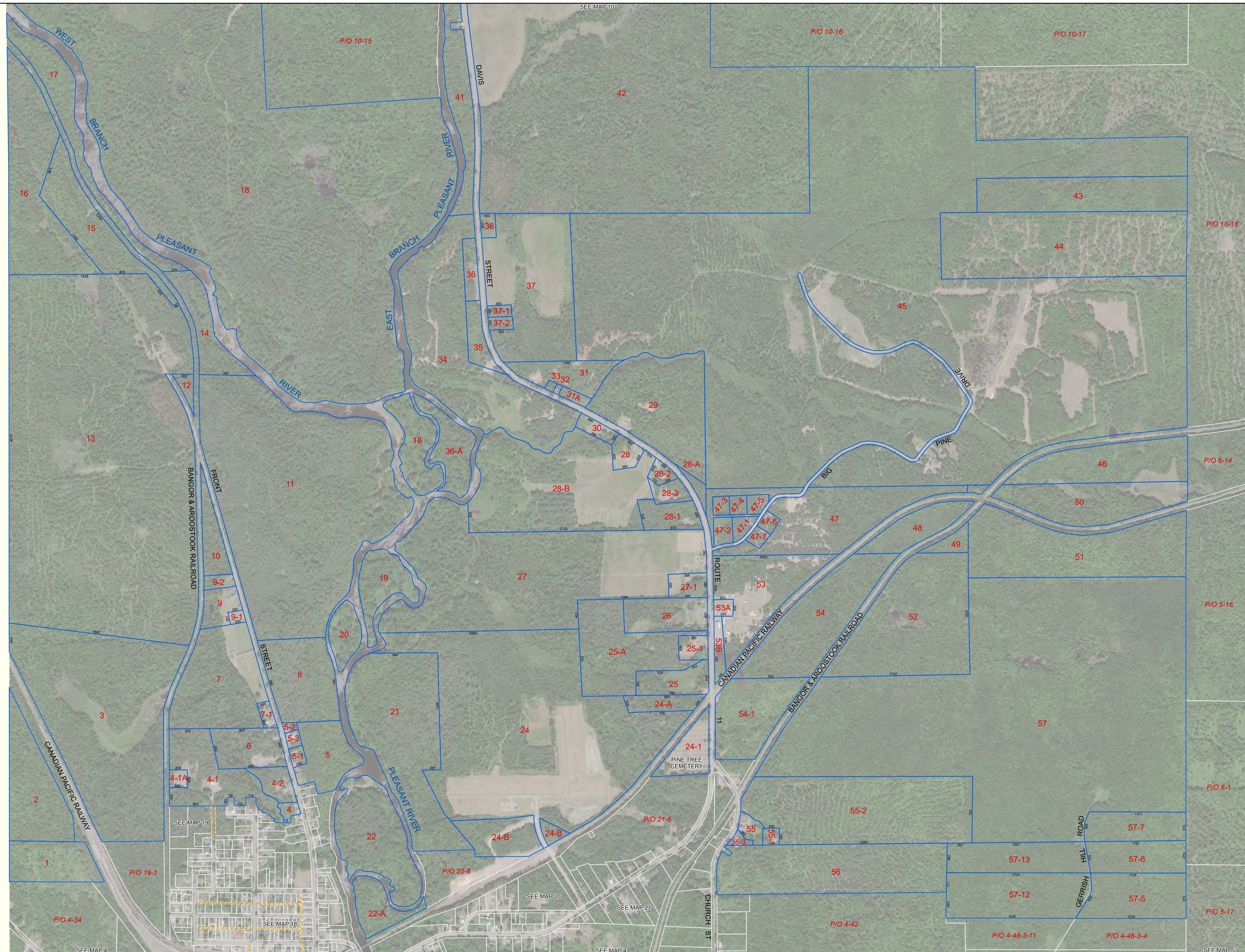
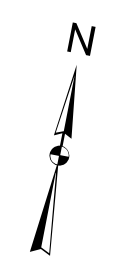


WILLIAMSBURG TOWNSHIP



PROPERTY MAPS
Tax Map
7

BROWNVILLE
Piscataquis County, ME

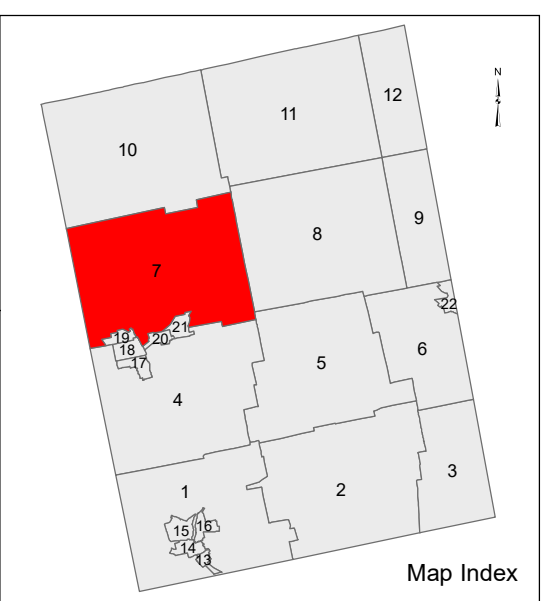


LEGEND

- PROPERTY LINE
- EASEMENT/RIGHT-OF-WAY
- PRIVATE RIGHT-OF-WAY
- HISTORIC/SUBDIVISION LINE
- PARCEL HOOK
- 2-1** PARCEL ID NUMBER
- 150 SURVEY DIMENSION (FEET)
- 1 SUBDIVISION LOT NUMBER

The information on this map is for assessment purposes only, is not a legal survey, and is not intended to be used for conveyance.

SCALE: 1 in = 500 ft
0 500 1,000



Aerial Layer Credits: Source: Esri, Maxar, GeoEye, Earthstar Geographics, CNES/Airbus DS, USDA, USGS, AeroGRID, IGN, and the GIS User Community

Original map created by J. W. Sewall Company.
Map updated by LatLong Logic, LLC.
(August 2020)

Brownville Assessor's Office
586 Main Road
Brownville, Maine 04414
(207) 965-2561